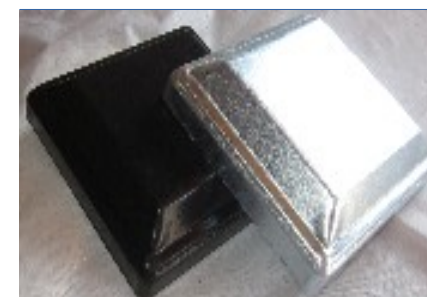


**"Celebrating Our 25:th Anniversary Soon ... & Counting"!!!**

<u>Part #:</u>	<u>Description &amp; Size :</u>	<u>Type:</u>	<u>Case Qnty:</u>	<u>Case Wt:</u>
<b>Metal Sqr. Post Caps:</b>				
3101	Sqr. Caps 1"	Galvn.	2000	45
3102	Sqr. Caps 1"	Galv+Blk	2000	46
3104	Sqr. Caps 1 1/2"	Galvn.	500	25
3105	Sqr. Caps 1 1/2"	Galv+Blk	500	26
3107	Sqr. Caps 2"	Galvn.	500	44
3108	Sqr. Caps 2"	Galv+Blk	500	45
3110	Sqr. Caps 2 1/2"	Galvn.	200	32
3111	Sqr. Caps 2 1/2"	Galv+Blk	200	33
3113	Sqr. Caps 3"	Galvn.	200	36
3114	Sqr. Caps 3"	Galv+Blk	200	37
3116	Sqr. Caps 4"	Galvn.	100	30
3117	Sqr. Caps 4"	Galv+Blk	100	32
3119	Sqr. Caps 6"	Galvn.	50	38
3120	Sqr. Caps 6"	Galv+Blk	50	42



Galvn. Galv+Blk &  
Galv+Prim  
1" - 6"



**PVC Plugs & Caps:**

		<u>Type:</u>	<u>Case Qnty:</u>	<u>Case Wt:</u>
3130	PVC Plugs 1/2"	PVC/Blk	1000	4
3131	PVC Plugs 5/8"	PVC/Blk	1000	5
3132	PVC Plugs 3/4"	PVC/Blk	1000	6
3133	PVC Caps 1"	PVC/Blk	500	7
3134	PVC Caps 1 1/2"	PVC/Blk	500	10
3135	PVC Caps 2"	PVC/Blk	500	14

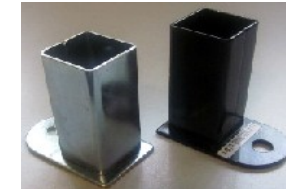


**Panel Mounting Brkts:**

			<u>Type:</u>	<u>Case Qty:</u>	<u>Case Wt:</u>
3301	PMB's	1"-Str	Galvn.	200	35
3302	PMB's	1"-Bias	Galvn.	200	33
3303	PMB's	1"-Str	Galv+Blk	200	35
3304	PMB's	1"-Bias	Galv+Blk	200	33



**Galvn. Galv+Blk Brkts.**



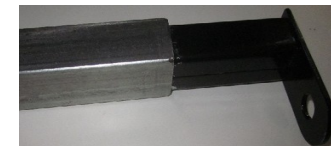
**Galvn. & Primed Brkts.**

**Special / Customized Panel Mounting Brkts:**

3318 PMB's 1"-Str  
 Inside Brkt.  
 (Special For Al-Rails)



3318



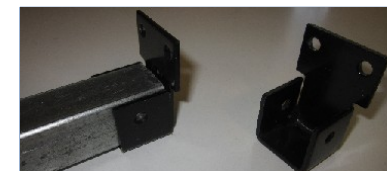
3319 PMB's 1"-Str & Bias  
 Inside Brkt.  
 (Special For Steel & Al-Rails)

3319



3320 PMB's 1"-Str  
 Outside Brkt.  
 (Special For ALL types of Rails)  
 Especially those - that contain Burr or Clogged/blocked on the inside)

3320



**"Innovation - Improvization - Experimentation - Modification"...**  
**All that comes "Easy To Us" & that is what "We Deliver To You"**

**Panel Mounting Brkts.**

3401	PMB's	1 1/4"-Str.	Galvn.	200	60
3402	PMB's	1 1/4"-Bias	Galvn.	200	55
3403	PMB's	1 1/4"-Str.	Galv+Blk	200	60
3404	PMB's	1 1/4"-Bias	Galv+Blk	200	55
3501	PMB's	1 1/2"-Str.	Galvn.	200	70
3502	PMB's	1 1/2"-Bias	Galvn.	200	60
3503	PMB's	1 1/2"-Str.	Galv+Blk	200	70
3504	PMB's	1 1/2"-Bias	Galv+Blk	200	60
3513	PMB's	1 1/2"-Str. 14 GA	Galv+Blk	100	32
3514	PMB's	1 1/2"-Bias 14 GA	Galv+Blk	200	64
3506	PMB's	2"-Str	Galvn.	100	45
3507	PMB's	2"-Str	Galv+Blk	100	45
3509	PMB's	2"-Str 14 GA	Galv+Blk	100	45

**Univ. Type Brkts..**

3311	Univ. Brkt.	1" X 1 1/2"	Galvn.	200	39
3312	Univ. Brkt.	1" X 2"	Galvn.	100	43
3313	Univ. Brkt.	1 1/2" X 2"	Galvn.	100	49
3314	Univ. Brkt.	2" X 2"	Galvn.	100	51
3315	Univ. Brkt.	1 1/2" X 1 1/2"	Galvn.	100	60
3316	Univ. Brkt.	1" X 1/4"	Galvn.	200	30
3317	Univ. Brkt.	1" X 1/2"	Galvn.	200	30

**Round Panel Mnting Brkts:**

3600	Round Brkts.	1 3/8" X 6"-Str	Galvn.	100	69
3601	Round Brkts.	1 3/8"-Str.	Galvn.	200	41
3602	Round Brkts.	1 3/8"-Bias	Galvn.	200	36

3701	Round Brkts.	1 5/8"-Str.	Galvn.	200	44
3702	Round Brkts.	1 5/8"-Bias	Galvn.	200	39
3703	Round Brkts.	1 5/8"-Str.	Galv+Blk	200	45
3704	Round Brkts.	1 5/8"-Bias	Galv+Blk	200	41

**Round To Round -Panel Mnting Brkts:**

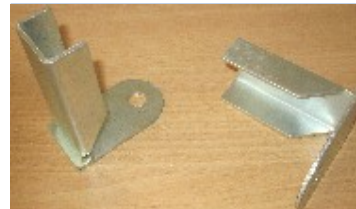
Where the Bases of the Brkts are to fit the form of a 1 1/3" Round Post or 1 5/8" Round Post and then FIT Inside of a 1 3/8" Round or 1 5/8" Rails



Galvn. & Galv+Blk Brkts.



Galv+Blk and Epoxy Blk



Univ. Type Brkts..

Universal - Pnl. Mntng. Brkts.



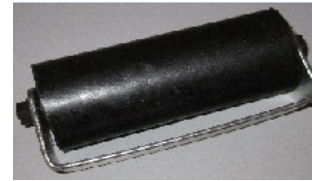
Brkts For Round Top & Bottom Rails.



Round To Round  
1 3/8" - Std., Bias Brkts

**Rubber Rollers - With Galvn. Brkts. & Adjustable Nuts:**

		Type:	Case Qty:	Case Wt:	
1512	Rubber Roller	3"	Galvn. Brkt 50	69	Avlbl.
1513	Rubber Roller	6"	Galvn. Brkt 20	47	<u>NOT Avlbl. Yet</u>
1514	Rubber Roller	12"	Galvn. Brkt 10	25	<u>NOT Avlbl. Yet</u>



**Hvy Duty BARREL HINGES:**

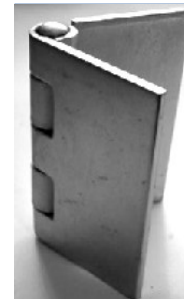
		Type:	Case Qty:	Case Wt:
4801	Barrel Hinges - P/C - Blk	7"	Galv+Blk 6 Prs.	41
4802	Barrel Hinges - P/C - Blk	5"	Galv+Blk 6 Prs.	24



**Hvy Duty BUTT HINGES - "Weldable" & Galvn.**

	Type:	Case Qty:	Case Wt:
4804	2 1/4" X 3 1/2" X 1/8"	Galvn. 160	31
4805	2 1/4" X 3 1/2" X 1/8"	Galvn. 50	20
4806	3" X 3" X 3/16" (Hvy)	Galvn. 50	30
4807	4" X 4" X 3/16" (Hvy)	Galvn. 50	32
4808	5" X 5" X 3/16"	Galvn. 10	35
4809	5" X 5" X 1/4" (Hvy Duty)	Galvn. 10	39
4810	6" X 6" X 3/16"	Galvn. 10	43
4811	6" X 6" X 1/4" (Hvy Duty)	Galvn. 10	50

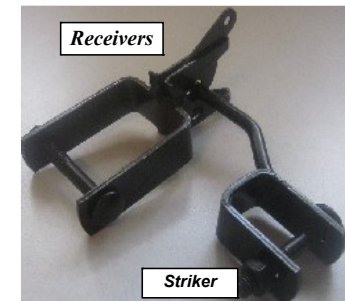
4805  
4806  
4807  
4808  
4809  
4810  
4811



4804  
For Wood, PVC & More

**Strikers & Receivers:**

	Type:	Case Qty:	Case Wt:
5100 Striker	1"	Galv+Blk 50	14
5101 Striker	1 1/2"	Galv+Blk 50	17
5102 Receiver	1"	Galv+Blk 50	18
5103 Receiver	1 1/2"	Galv+Blk 50	31
5104 Receiver	2"	Galv+Blk 50	38
5105 Receiver	2 1/2"	Galv+Blk 25	18



**"Plz. DO NOT ORDER OUR PRODUCTS FOR OUR "Competitive Price Structures" as that is something we may be able to "Compromise On" ...  
Do it for the "High QUALITY & Uncompromised Service" !!!**

**SLIDE ACTION BOLT**

***(Crome Plated.)***

***Part #: Description & Size:***

**8105 Slide Action Bolt 4" BZP 25 15 *(Crome Plated.)***



***(Crome Plated.)***

**8106 Slide Action Bolt 4" (Epoxy Coated Black) EXB 25 15**

***Epoxy Blk***



***PANEL STANDS - (Temp. Fence Solutions)***

***(Galvn. & Powder Coated Constr. Orange)***

**9500 18" X 36" X 2" Type: Galv+Orng. Case Qty: 50 Case Wt: 481**

**9504 6" X 36" X 1/4" Type: Galv+Orng. Case Qty: 50 Case Wt: NDY**



**9500**



**9504**

***UPHILL HEAVY DUTY HINGES***

**8405 Uphill Hinges For Rising & Very Hvy Gates 12" X 8" X 2" Square Barrels Type: Galvn. Case Qty: 2 Prs Case Wt: 68**

**8406 Uphill Hinges For Rising & Very Hvy Gates 12" X 8" X 2" Round Barrels Type: Galv+Blk Case Qty: 2 Prs Case Wt: 47**

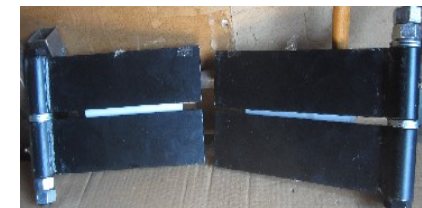


**Part #: 8405**



***Customized Stnd.***

**Part #: 8406**





**FLOOR FLANGES:**

1100	3" X 3" X 3/16"	Galvn.	50
1101	4" X 4" X 3/16"	Galvn.	50



**HEAVY DUTY - FULL 1/4" (6.35 mm) Floor Flanges.**

(These Plates are also made with the purpose of using them in Fed and cal-Trans Jobs. Jobs specified by Architechets)

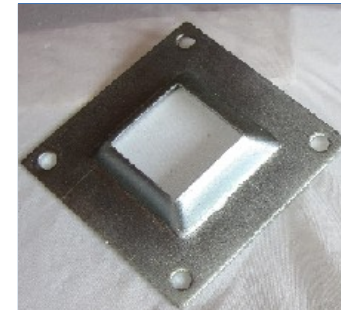
	<u>Type:</u>	<u>Case Qty:</u>	<u>Case Wt:</u>
1110	3" X 6" X <u>Full 1/4"</u> (6.35 mm) HDG	50	69
1111	6" X 6" X <u>Full 1/4"</u> (6.35 mm) HDG	25	47
1112	8" X 8" X <u>Full 1/4"</u> (6.35 mm) HDG	10	45



1102  
& 1110

**RAISED FLOOR FLANGES / PLATES:**

	<u>Type:</u>	<u>Case Qty:</u>	<u>Case Wt:</u>
1108	Raised Floor Flange. 4" X 4" W/ Hole for 1 1/2" Sqr. Post	Galvn.	50 35
1109	Raised Floor Flange. 5 1/4" X 5 1/4" W/Hole For 2" Sqr. Post	Galvn.	50 53



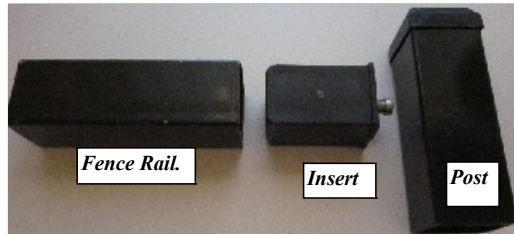
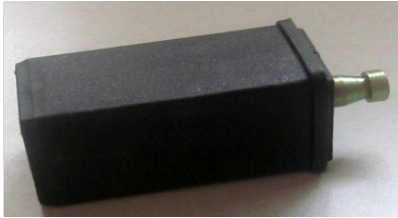
**HAND RAIL BRKTS:**

	<u>Type:</u>	<u>Case Qty:</u>	<u>Case Wt:</u>
8101	Hand Rail Brkt.	Galvn.	50 25



**" Excellence In SERVICE – Is Not Just An Act On Our Part – IT IS OUR HABIT" !!!**

**EMCON Inserts**



**EASY AS 1-2-3**



**Just Drill A Hole in the Post & Pop the Insert into the Post**

**EMCON Inserts**

**Our famous time and labor saving EMCON Inserts. Quick & Easy. Install in Minutes.**

			<u>Type:</u>	<u>Case Qty:</u>	<u>Case Wt:</u>
4701	EMCON Inserts	For 1" Top & Bottom Panel Rails	GFN/Steel	200	22
4702	EMCON Inserts	For 1 1/4" Top & Bottom Panel Rails	GFN/Steel	200	47
4703	EMCON Inserts	For 1 1/2" Top & Bottom Panel Rails	GFN/Steel	200	37
4704	EMCON Inserts	For 2" Top & Bottom Panel Rails	GFN/Steel	100	20
4705	EMCON Inserts	For 1 3/8" Top & Bottom ROUND Panel Rails	GFN/Steel	200	47
4706	EMCON Inserts	For 1 5/8" Top & Bottom ROUND Panel Rails	GFN/Steel	100	28

**ASK  
US  
ABOUT  
OUR  
FREE  
SHIPPING !!!**

**WE ARE ALWAYS EAGER TO DO SOMETHING "NEW" !!!**

**POST & GATE HINGES:**

*(Male (Post) Hinges & Feml. (Gate) Hinges)*

			<u>Type:</u>	<u>Case Qty:</u>	<u>Case Wt:</u>
3802	Male (Post) Hinge	1" X 5/8"	Galvn.	50	19
3804	Male (Post) Hinge	1 1/2" X 5/8"	Galvn.	50	24
3806	Male (Post) Hinge	2" X 5/8"	Galvn.	50	32
3808	Male (Post) Hinge	2 1/2" X 5/8"	Galvn.	25	24
3902	Male (Post) Hinge	1" X 5/8"	Galvn+Blk	50	19
3904	Male (Post) Hinge	1 1/2" X 5/8"	Galvn+Blk	50	24
3906	Male (Post) Hinge	2" X 5/8"	Galvn+Blk	50	33
3908	Male (Post) Hinge	2 1/2" X 5/8"	Galvn+Blk	25	33
4001	Feml (Gate) Hinge	1" X 1/2"	Galvn.	50	13
4002	Feml (Gate) Hinge	1" X 5/8"	Galvn.	50	14
4004	Feml (Gate) Hinge	1 1/2" X 5/8"	Galvn.	50	17
4006	Feml (Gate) Hinge	2" X 5/8"	Galvn.	50	25
4008	Feml (Gate) Hinge	2 1/2" X 5/8"	Galvn.	25	18
4101	Feml (Gate) Hinge	1" X 1/2"	Galvn+Blk	50	13
4102	Feml (Gate) Hinge	1" X 5/8"	Galvn+Blk	50	14
4104	Feml (Gate) Hinge	1 1/2" X 5/8"	Galvn+Blk	50	21
4106	Feml (Gate) Hinge	2" X 5/8"	Galvn+Blk	50	25
4108	Feml (Gate) Hinge	2 1/2" X 5/8"	Galvn+Blk	25	19



\*\*\* Nuts & Bolts Included...!!!



\*\*\* Nuts & Bolts Included...!!!



**FLAT WALL HINGES:**

			<u>Type:</u>	<u>Case Qty:</u>	<u>Case Wt:</u>
4201	Flat Wall Hinge	1/2" - Pin	Galvn.	50	25
4202	Flat Wall Hinge	5/8" - Pin	Galvn.	50	25
4203	Flat Wall Hinge	1/2" - Pin	Galv+Blk	50	25
4204	Flat Wall Hinge	5/8" - Pin	Galv+Blk	50	25

**RINGS - Hvy Duty & Galvn.**

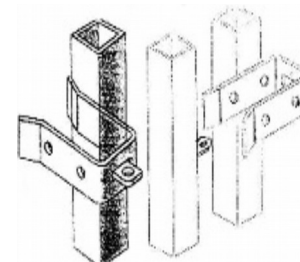
			<u>Type:</u>	<u>Case Qty:</u>	<u>Case Wt:</u>
4301	Full Circles	4" O.D X 5/8" - Solid Rod	Galvn.	50	33
4200	Half Rings - Empire Hoops	3/4" X For 5/8"-Pickets	Galvn.	500	36



Rings

**Slide Gate Latches:**

			<u>Type:</u>	<u>Case Qty:</u>	<u>Case Wt:</u>
8102	Slide Gate Latches:	Univ. Fit	HDG	25	25
8103	Slide Gate Latches:	Univ. Fit	EXB	25	25





**HEAVY DUTY GATE & STORAGE CONTAINER LOCK BOX - Galvn.**  
 (3-Pcs Lock Box Set - Hvy Duty - All Parts made of 1/4"-Thick Steel)

	<u>Type:</u>	<u>Case Qty:</u>	<u>Case Wt:</u>
8109	Galvn.	10 Sets	69



Part #: 8109



**LOCK BOXES:**

	<u>Type:</u>	<u>Case Qty:</u>	<u>Case Wt:</u>
5201	Galvn.	25	25
5301	Galvn.	25	50



Part #: 5201



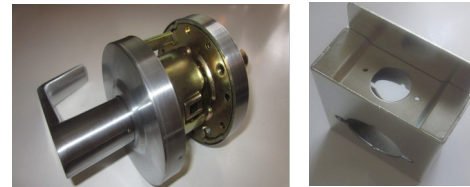
Part #: 5301

SPACIAL LOCK BOX  
5202



Part #: 5202

**Ask US ABOUT THE BOX FOR THIS LOCK BOX SET.**



Part #: 5202

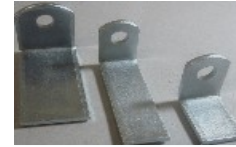
**WHEEL BOXES - Hvy Duty & Galvn.**

	<u>Type:</u>	<u>Case Qty:</u>	<u>Case Wt:</u>
5106	Wheel Box (Hvy Duty)	4"	Galvn. 10 23
5107	Wheel Box (Hvy Duty)	6"	Galvn. 10 40



**L- Brkts**

LB-01	L-Brkts:	1 1/2" X 2" X 1 1/2"	Galvn.	100	33
LB-02	L-Brkts:	1 1/2" X 1 1/2" X 1 1/2"	Galvn.	100	40
LB-03	L-Brkts:	1 1/2" X 4" X 1"	Galvn.	100	21
LB-04	L-Brkts:	1 1/2" X 3 3/4" X 1"	Galvn.	100	20
LB-05	L-Brkts:	1 1/2" X 3" X 1"	Galvn.	100	17
LB-06	L-Brkts:	1 1/2" X 2" X 1"	Galvn.	200	25
LB-07	L-Brkts:	1 1/2" X 1 1/2" X 1"	Galvn.	200	21
LB-08	L-Brkts:	1 1/2" X 1" X 1"	Galvn.	200	17
LB-09	L-Brkts:	1 1/2" X 4" X 1 1/2"	Galvn.	100	33
LB-10	L-Brkts:	1 5/8" X 3" X 1 1/2"	Galvn.	100	33
LB-11	No Hole Tab	2 1/2" X 1 1/2"	Galvn.	100	35



WB-01	Weld-On; 2-Hole Brkts.	4 7/8" X 1 1/2"	Galvn.	100	57
WB-02	Weld-On; 2-Hole Brkts.	4" X 1 1/2"	Galvn.	100	24
WB-03	Weld-On; 1-Hole Brkts.	3" X 1 1/2"	Galvn.	200	44
WB-04	Weld-On; 1-Hole Brkts.	2 7/8" X 1 1/4"	Galvn.	200	31
WB-05	Weld-On; 1-Hole Brkts.	2 7/8" X 1"	Galvn.	200	18
WB-06	Weld-On; 1-Hole Brkts.	1 1/2" X 1 1/2"	Galvn.	500	21



**ELBOWS**

<u>Part #:</u>	<u>Description &amp; Size:</u>	<u>Type:</u>	<u>Qnty/Box:</u>	<u>Wt.: / Box</u>
4205	Steel Elbows 1 5/8" - 90 Degree	Galvn.	50	14



**LONG SHANK TENSION BANDS:**

<u>Part #:</u>	<u>Description &amp; Size:</u>	<u>Type:</u>	<u>Qnty/Box:</u>	<u>Wt.: / Box</u>	<u>In. Pr. / Pce</u>
LS - 158	Long Shank Ten. Band 1 5/8"	HDG	100		
LS - 178	Long Shank Ten. Band 1 7/8"	HDG	100		

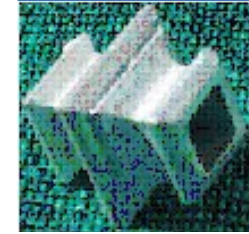
**BANDS that connect Wire Mesh to GATE FRAMES.**



**Galvn. / HDG**

**CAST IRON - KNUCKLES**

			<u>Type:</u>	<u>Case Qnty:</u>	<u>Case Wt:</u>
4913	Knuckles	1/2"	Galvn.	50	18
4915	Knuckles	5/8"	Galvn.	50	27



Knuckles

**C.B. - 44 With 6" and 10" Stubs**

(Galvn. / Zn-Plated)

<u>Part #:</u>	<u>Description &amp; Size:</u>	<u>Type:</u>	<u>Qnty/ Crates</u>
3204	C.B - 44 With 6" - Stubs	Galvn.	Loose In Crates.
3305	C.B - 44 With 10" - Stubs	Galvn.	Loose In Crates.



**C.B. - 44 With 4" Plates (Galvn. / Zn-Plated)**

<u>Part #:</u>	<u>Description &amp; Size:</u>	<u>Type:</u>	<u>Qnty/Box:</u>	<u>Wt.: / Box</u>
3203	C.B. - 44 With 4" X 4" X 3/16" Floor Plates	Galvn.	10	19

3206



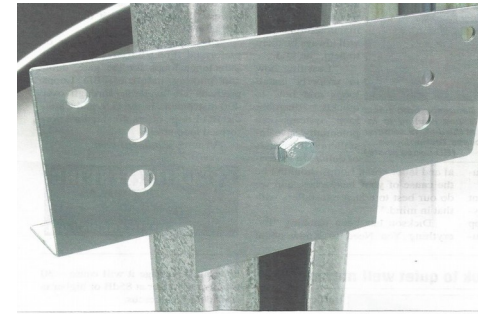
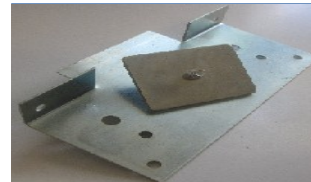
**"THINKING BEYOND US - GIVES US IMMENSE JOY"**

**WE PROVIDE "Money Back Guarantee" ...  
So YOU Have Nothing To Lose .....!!!**

**" People With Creative Designs – Innovative Technologies & Intelligent Products" !**

**C-CHANNEL BRKTS.**

<u>Part #:</u>	<u>Description &amp; Size:</u>	<u>Type:</u>	<u>Qty/Box:</u>	<u>Wt.: / Box</u>
1507	C-Channel Brkts Univ. Size	BZP	100	



**TEE HINGES:**

<u>Part #:</u>	<u>Description &amp; Size:</u>	<u>Type:</u>	<u>Qty/Box:</u>	<u>Wt.: / Box</u>	<u>In. Pr. / Pce</u>
8107	Tee Hinge 6"	EXB <i>(Epoxy Coated Black)</i>	25	26	



Epoxy Blk

8108	Tee Hinge 6"	BZP	25	26	
------	-----------------	-----	----	----	--



***Simple Door HINGES - Used In Building Industry***

**SLIDE ACTION BOLT**

*(Crome Plated.)*

<u>Part #:</u>	<u>Description &amp; Size:</u>	<u>Type:</u>	<u>Qty/Box:</u>	<u>Wt.: / Box</u>	<u>In. Pr. / Pce</u>
8105	Slide Action Bolt 4"	BZP	50		

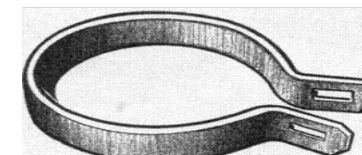


***Simple Door Locks - Used I Building Industry***

**SLIDE ACTION BOLT**

*(Epoxy Coated Black)*

8106	Slide Action Bolt 4"	EXB	50		
------	-------------------------	-----	----	--	--



***BRACE BANDS:***

<b><i>Part #:</i></b>	<b><i>Description &amp; Size:</i></b>		<b><i>Type:</i></b>	<b><i>Qty/Box:</i></b>	<b><i>Wt.: / Box</i></b>	<b><i>In. Pr. / Pce</i></b>
1900	Brace Band. (Reg.)	1 3/8"	BZP	200		
1901	Brace Band. (Reg.)	1 5/8"	BZP	200		
1902	Brace Band. (Reg.)	1 7/8"	BZP	100		
1903	Brace Band. (Reg.)	2 3/8"	BZP	100		
1904	Brace Band. (Reg.)	2 7/8"	BZP	100		

***Connects Wire Mesh onto a Chain Link Pole (Post) Pipe***

